



Vessel Name	Built	IMO No.	Flag
Lily T	2002	9198616	Netherlands

#### MAIN DATA

Vessel type Classification	Multipurpose Tweendecker DNV/GL strengthened for heavy cargoes, equipped for the carriage of containers, equipped for the carriage of dangerous goods
GT/NT	3,194 / 1,725
Deadweight (summer)	4,325 mt
Max. draft (summer)	5.74 m
Length o.a.	98.90 m
Breadth moulded	13.80 m
Height above keel	30.50 m
Max. Speed	12.5 knots
Fuel consumption	11.0 mt RME 180 fuel per day at sea 0.7 mt MGO DMA per day in port without gear 1.2 mt MGO DMA per day in port with gear

#### HOLDS/HATCHES/CRANES

Cargo hold capacity	6,371 cbm / 224,895 cbft
Floor space under deck	1,490 sqm / 16,038 sqft
Floor space on deck	790 sqm / 8,503 sqft
Cranes	2 cranes situated portside 60 mt capacity each / 120 mt capacity combined
Container intake	274 TEU nominal 152 TEU at 14 mt homogeneously loaded 20 reefer plugs on deck
Deck strengths per sqm	15.00 mt on tanktop 2.50 mt on tweendeck 1.60 mt on hatchcovers

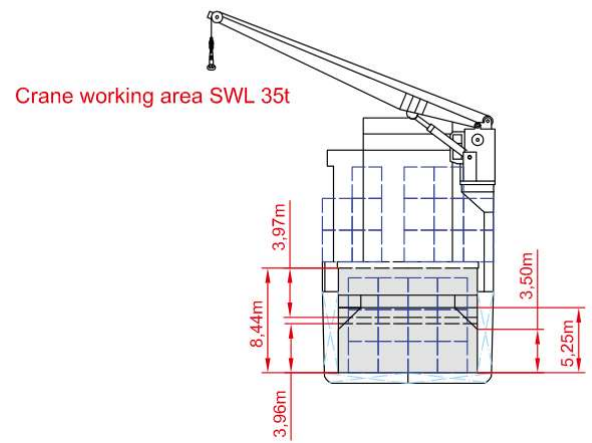
#### SPECIAL EQUIPMENT/FEATURES

Fitted for trading Great Lakes and Australia.  
Fitted for carriage of dangerous goods of all IMO classes

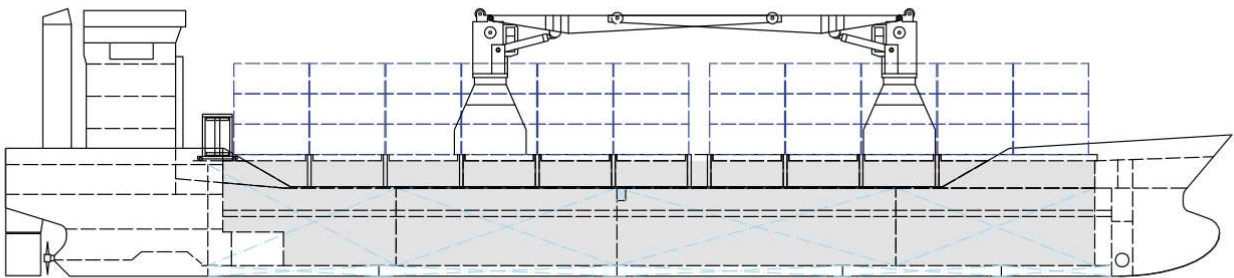


Speed and consumption figures are calculated basis maximum Beaufort 2, no swell and no adverse currents. Consumption data assumes shaft generator and reefer plugs disconnected. Vessel is burning fuels according to ISO 8217-2005. Intake is always subject to vessel's stability, trim, permissible weights and is subject to regulations of visibility. Lifting capacity of vessel's cranes is subject to vessel's stability and can depend on cargo/ballast on board. Container data as well as bale capacity assumes tweendeck ashore. All details including speed and consumption are given in good faith and are „about“ and are given without guarantee.

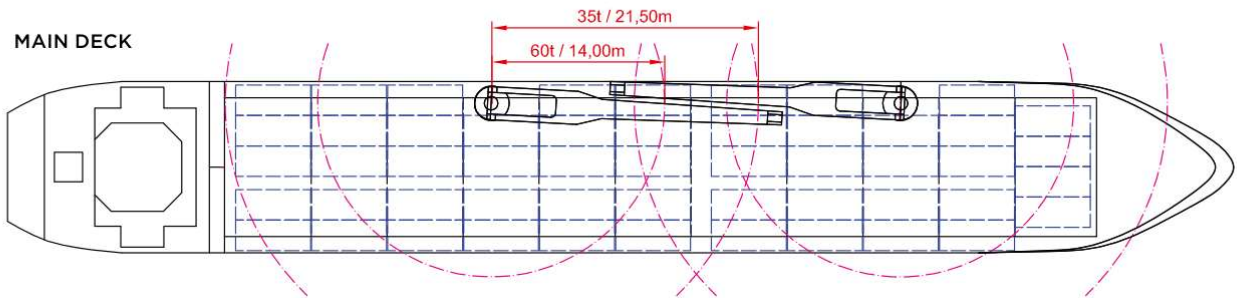
# LILY T



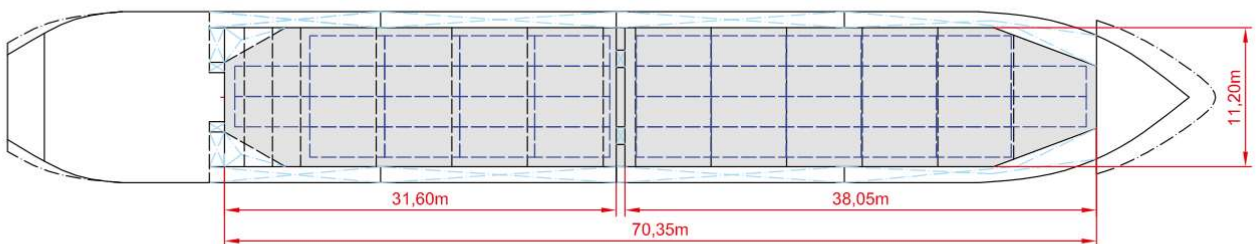
SIDE VIEW



MAIN DECK



TWEENDECK



HOLDS & DOUBLE BOTTOM

